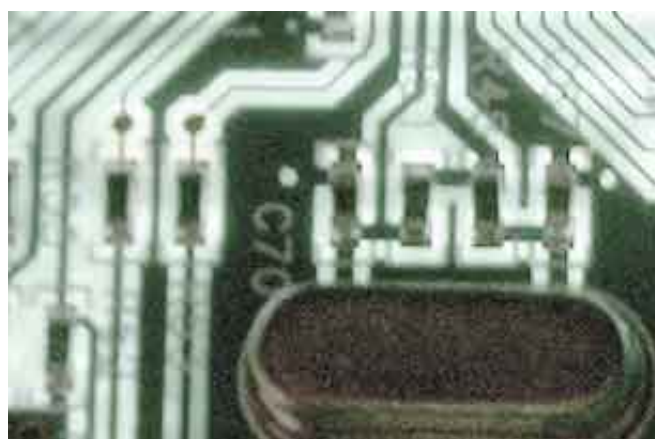




0-WEB.ru

[Hardlock Device Driver Windows 8 X64 Key](#)



[Hardlock Device Driver Windows 8 X64 Key](#)



0-WEB.ru

C Upgrading Windows 8 1 to a PC that has Dobby IT software from before 31-2013 If you are Dobby IT software installed on a computer with Windows 8.. Follow the instructions below to install the correct driver: Remove the hardware key from your computer and do not insert it until you have installed the new car.. If this happens double-click the HASPUserSetup.exe file again The Hasp driver should now be installed without any problems.

exe and follow the instructions on the screen For more information about gemalto and the purchase of SafeNet click [HERE](#) Windows 7 Navigate to the Start menu and enter the search box: cmd When appears in the application list right-click on it and select: Run as administrator.. To run the Noldus IT software put the hardware key in a USB port on your computer and wait for the red light to appear in the button before the program starts.. To run the Noldus IT software put the hardware key in a USB port on your computer and wait for the red light to appear in the button before the program starts.. If you put the hardware key into the computer get the following warning message: Double-click the file Download file HASPUserSetup.

hardlock device driver windows 10

hardlock device driver windows 10, hardlock device driver windows 7 x64 download, hardlock device driver windows 7, hardlock device driver windows xp, hardlock device driver windows 10 x64, sentinel hardlock device driver windows 10, aladdin hardlock device driver windows 10, hardlock device driver for windows x64, hardlock device driver for windows 10 64 bit, hardlock device driver for windows 8.1 x64, hardlock device driver for windows 7 32 bit, hardlock device driver for windows 7 x64 free download, sentinel hardlock device driver for windows x64 compatibility issues

Open the elevated control panel by following the steps below Comments: If you do not have the Run as administrator option contact your company administrator to access or execute the procedure for you.. Install Noldus IT software from 31-2013 on Windows 8 1 computer Do not install the hardware key in a USB port on your computer before installing the new car.. Dobby IT software of before 31-2013 is installed on Windows 8 1 computer during installation of Dobby IT software following warning message appears.

hardlock device driver windows 7

0 or earlier and upgraded to Windows 8 1 you will see a warning that Sentinel Runtime must remove.

hardlock device driver windows 10 x64

e10c415e6f